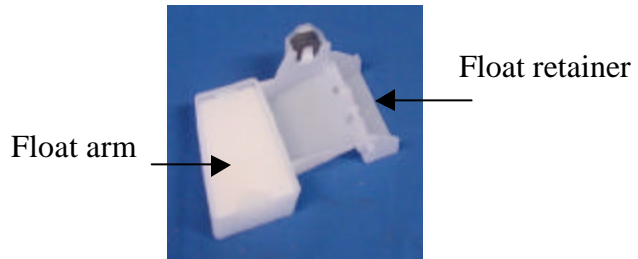
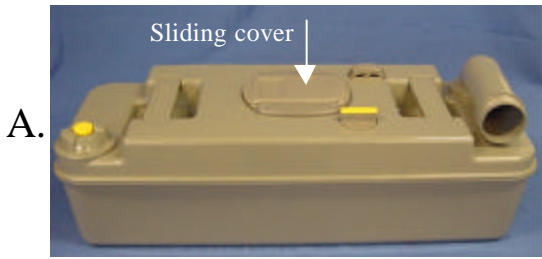
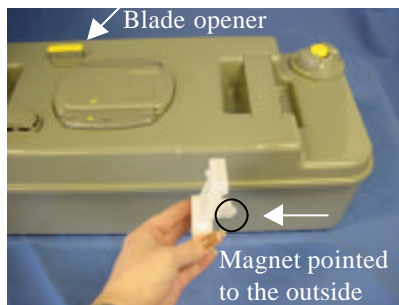


21322 Float arm

1. Cassette C2/C3/C4



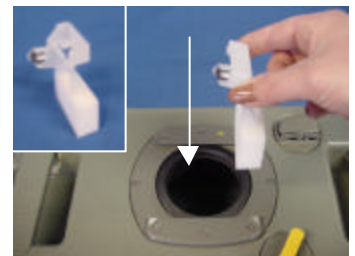
Position float arm, view from the outside. Float arm is always assembled on the opposite side of the blade opener.



B. For placing the new float arm, take sliding cover off, open the blade and go with your hand in the waste tank.



Magnet always has to point to the outside of the waste tank.



Note : If the float retainer is still in the waste tank (float arm has fallen off), the new float arm can not be assembled. Float retainer has to be taken out first. This can be done with a small flat screwdriver. As the waste tank is welded, this can only be done through the hole in the middle.

Inside view to take the float retainer out. Place screwdriver between rib and float retainer and lift it up.



C. Inside view waste tank.

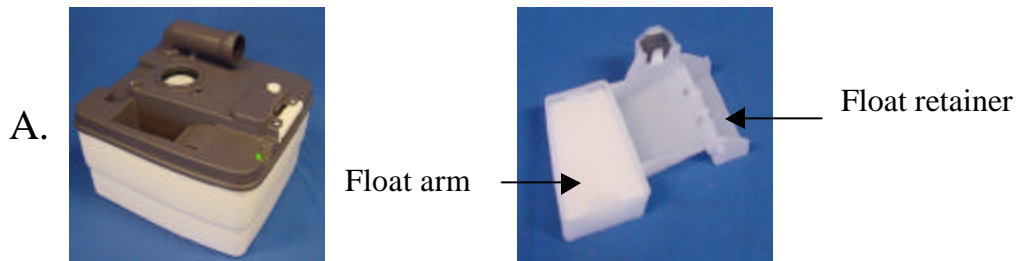


Press the float retainer in.

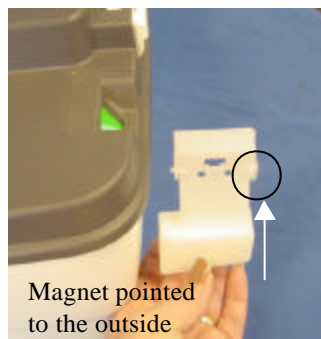


21322 Float arm

2. Porta Potti



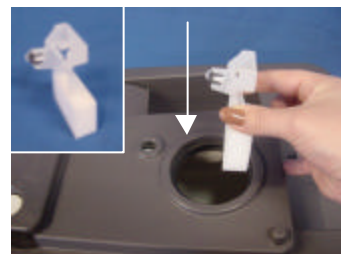
Position float arm,
view from the outside.



B. For placing the new
float arm, open the
blade and go with
your hand in the
waste tank.



Magnet always has to
point to the outside of
the waste tank.



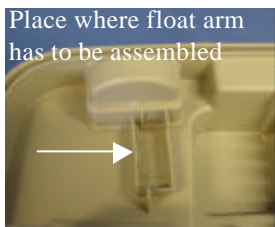
Note : If the float retainer is still in the waste tank (float arm has fallen off), the new float arm can not be assembled. Float retainer has to be taken out first. This can be done with a small flat screwdriver. As the waste tank is welded, this can only be done through the hole in the middle.

**Inside view to take the
float retainer out.
Place screwdriver
between rib and float
retainer and lift it up.**



C. Inside view
waste tank.

Place where float arm
has to be assembled



Press the
float retainer
in.

